

User Manual

VNC & AutoRunMaker

GRAPHIC SYMBOLS



INFORMATION, it helps users with more details about the topic and failure to follow may lead to unpredictable results.



WARNING, Failure to follow may lead to minor injury or damage / malfunctioning of equipment



DANGER, Failure to follow may lead to injury or fatal accident to operating personal or damage/malfunctioning of equipment



CAUTION, Failure to follow may lead to malfunctioning of equipment, damage or repair



Protective Earth



DC Supply

PREFACE

Original equipment manufacturer reserves the right to change information available in this document without notice. Original Equipment manufacturer is not liable for any damages incurred to equipment/personal during installation or use of equipment as explained in this document. User must acquire sufficient knowledge & skills prior to use the equipment in the application and follow all the local standards & regulations to meet safety requirements

WinCE® is registered trade mark of Microsoft Corporation

TABLE OF CONTENTS

1.	INTRODUCTION.....	4
1.1	WINCE IMAGE VARIANTS	4
1.2	VNC	4
1.3	AUTORUNMAKER	4
2.	Setup.....	5
2.1	Tools Location	5
2.2	Auto Run Maker	6
2.3	How to startup VNC by AutoRunMaker	7
2.4	VNC CONFIGURATION	11

INTRODUCTION

WINCE IMAGE VARIANTS

Following WinCE images are available

HMI model	WinCE version	File name
HMI 450,730	WinCE Core	OEM_6410
HMI 450,730	WinCE Professional	OEM_6410
HMI 750/1050/1550	WinCE Core	OEM_PC100
HMI 750/1050/1550	WinCE Professional	OEM_PC100

VNC

WinCEVNC should be installed in HMI WinCE images by AutoRunMaker.

AutoRunMaker

AutoRunMaker startup WinCEVNC and automatically install WinCEVNC in HMI

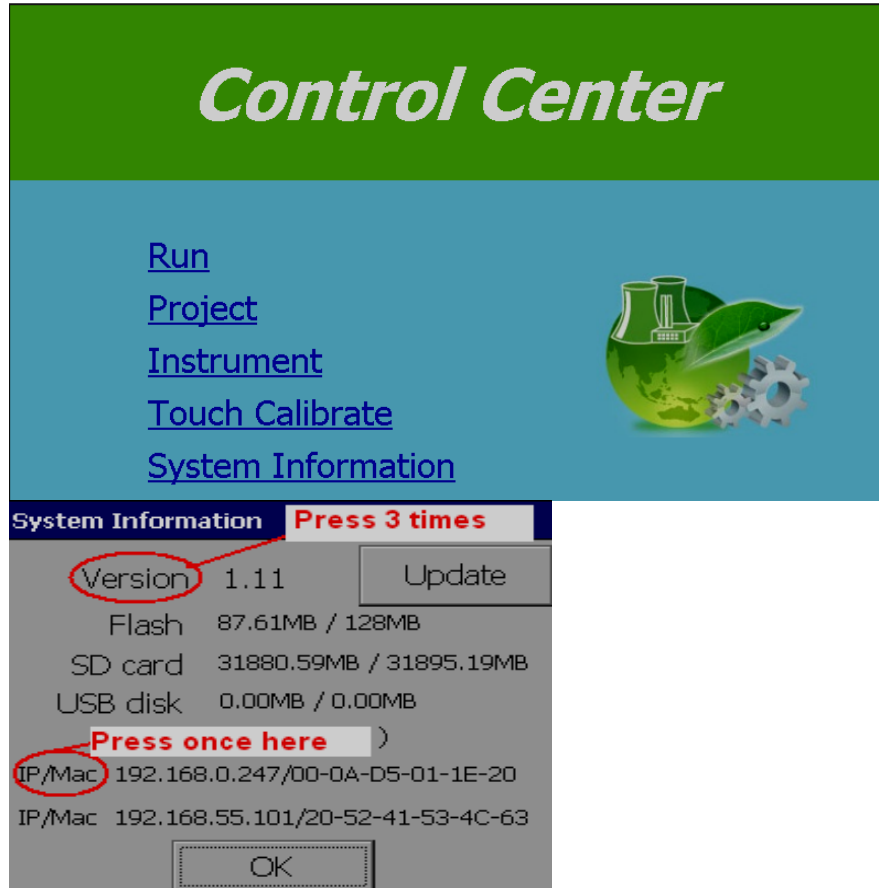
Setup

Tools Location

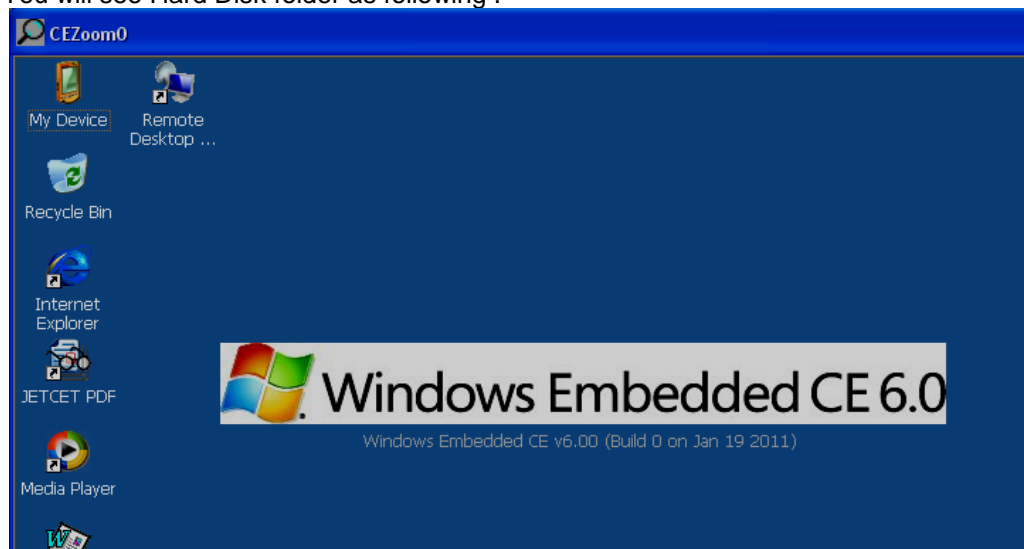
Step-1 , get tools from <ftp://bctemp:bctemp@211.72.166.116> to USB

Step-2 , plug USB to HMI.

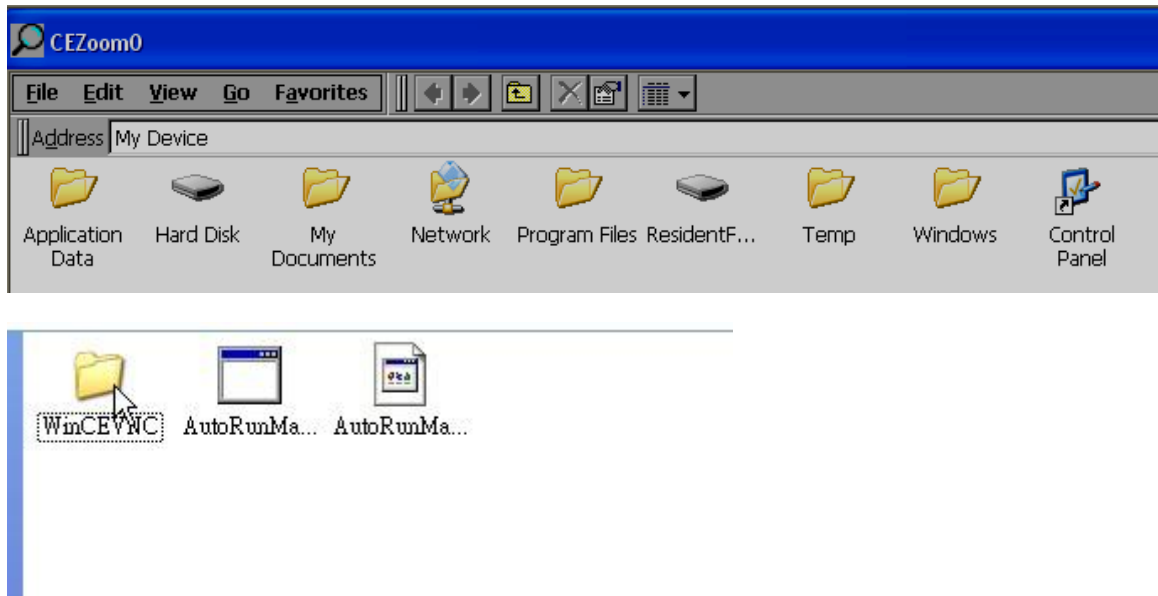
Step-3, Double-Click System Information in HMI , and then press Version 3 times , press IP/Mac once.



You will see Hard Disk folder as following .

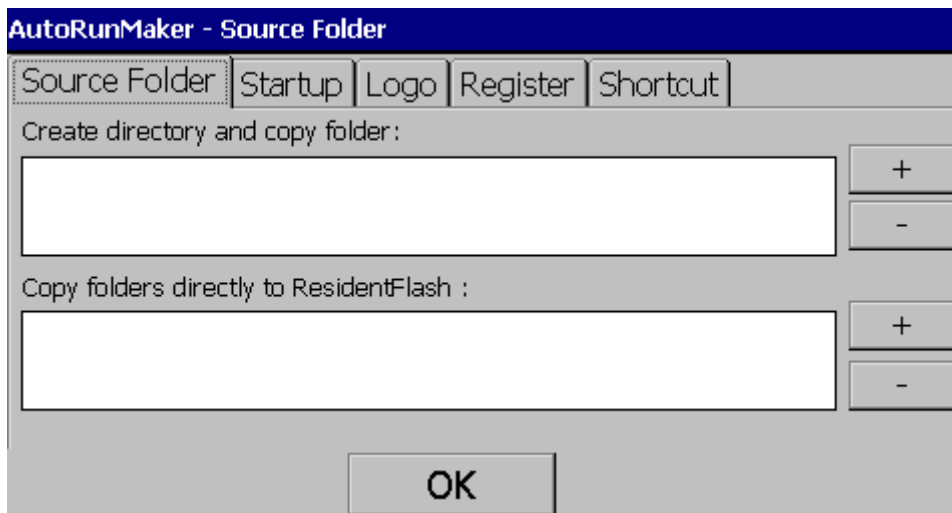


Step-4 , double-click My device and double-click Hard Disk and double-click AutoRunMaker. You will see WinCEVNC folder and AutoRunMaker batch files as following.



Note : USB stick will be shown at "Hard Disk" at "My device"
HMI Onboard flash memory will be shown as "Resident Flash" at "My device"

2.2 AUTO RUN MAKER



Source Folder: It is to select the location for the source folders/files to be copied from USB disk to Resident flash

Create directory and Copy folder: Select this option if you wish to create a default directory at Resident flash by name “AutoRunMaker” and then copy all the contents to this folder

Copy folders directly to Resident Flash: Select this option if you wish to copy the folders/files directly to Resident flash



Press this to add the folder



Press this to remove the folder. If there are some folders created earlier, it will show the path, first select required path to be removed and then press this button to remove the content from Resident flash

Startup: It is to select the path for the exe file at HMI Power ON

Logo: It is to select the boot logo. This logo will appear after HMI Power ON

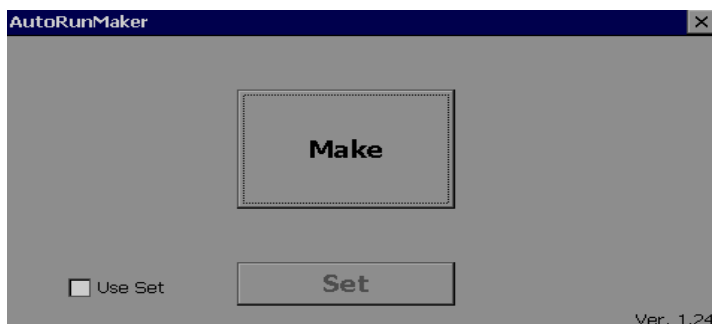
Register: It is to add/modify contents to Windows Registry

Shortcut: It is to create desktop shortcut for the required applications

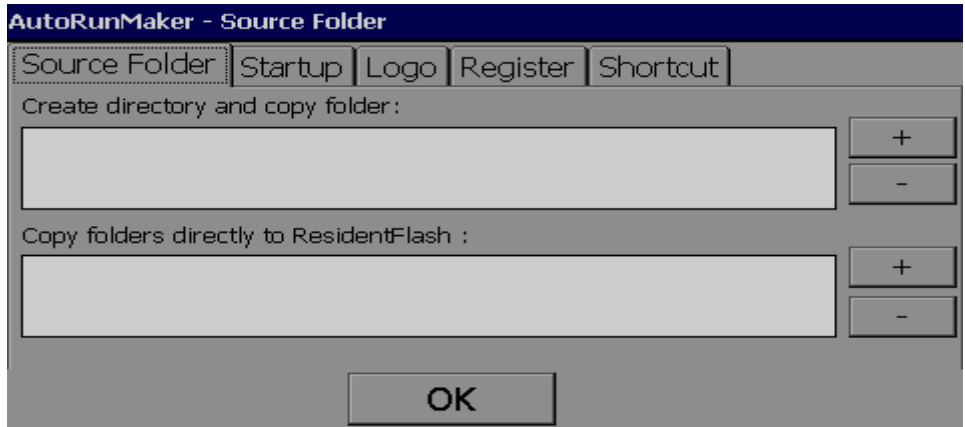
2.3 How to startup VNC by AutoRunMaker

After 2.1 Tool Location , 2.2 AutoRunMaker. You have VNC tools and know AutoRunMaker. By the following steps you must startup VNC by AutoRunMaker.

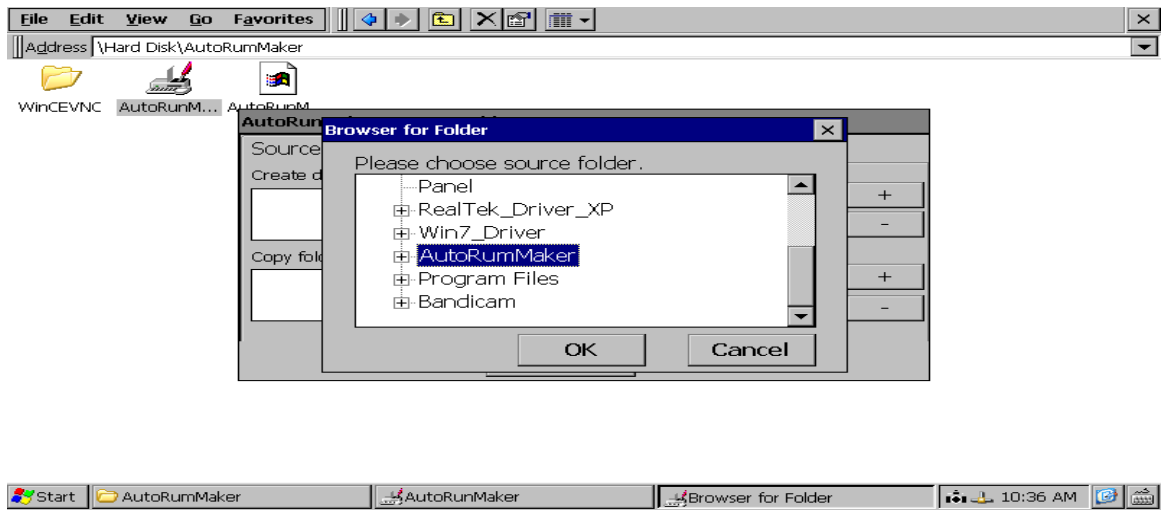
Step-1: Go to AutoRunMaker folder and double-click AutoRunMaker batch files . You will see AutoRunMaker.



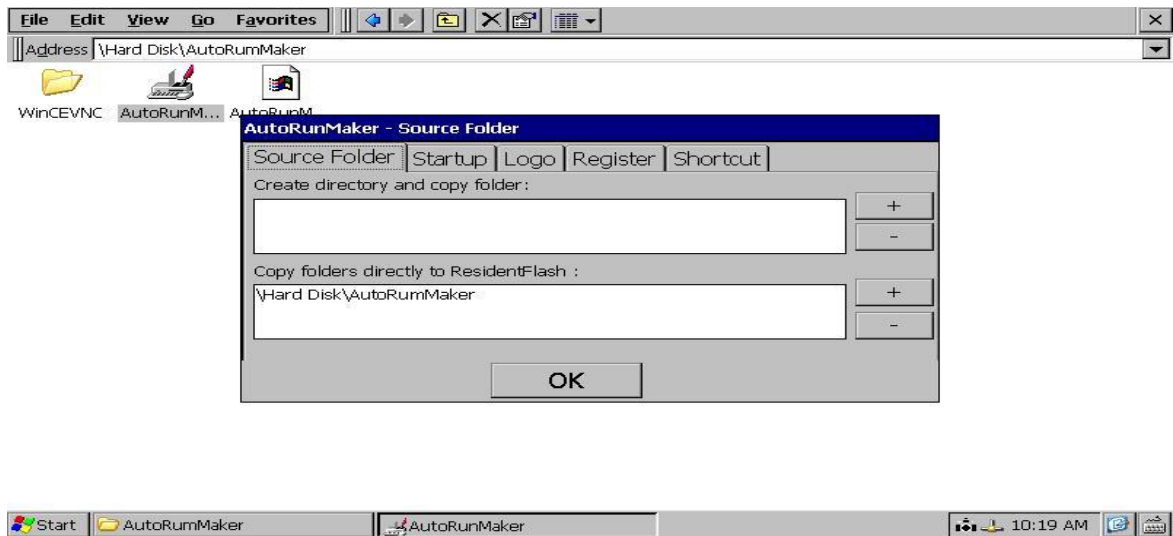
Step-2: Select “Use Set” check box and press “Set”



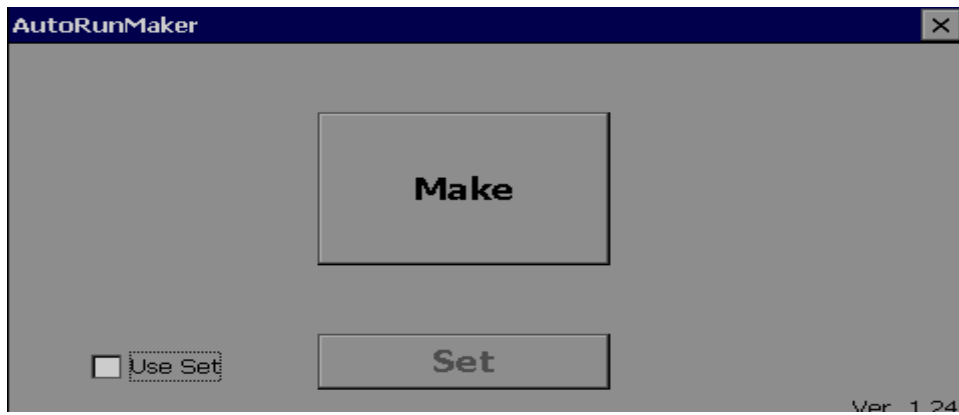
Step-3: Press  button at “Copy folders directly to Resident flash:” ,



Select “AutoRunMaker ” and press “OK”

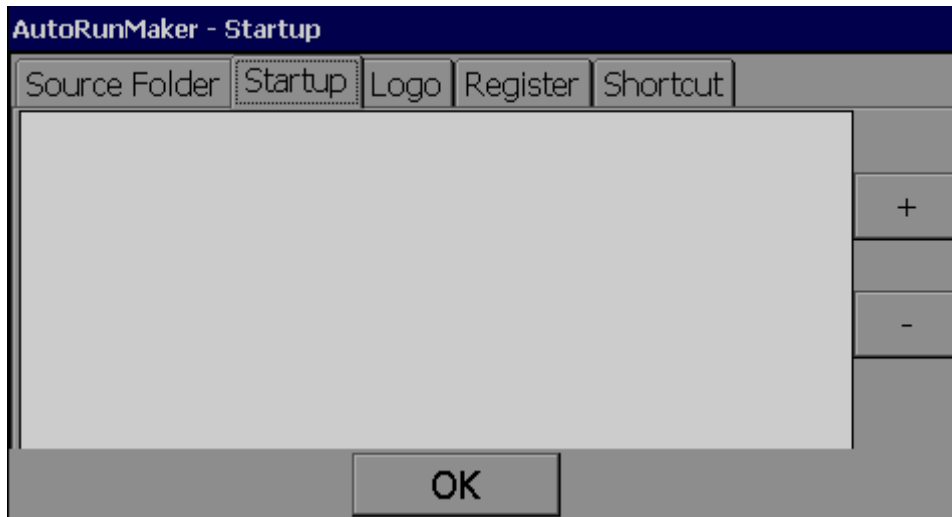



And then click Make,

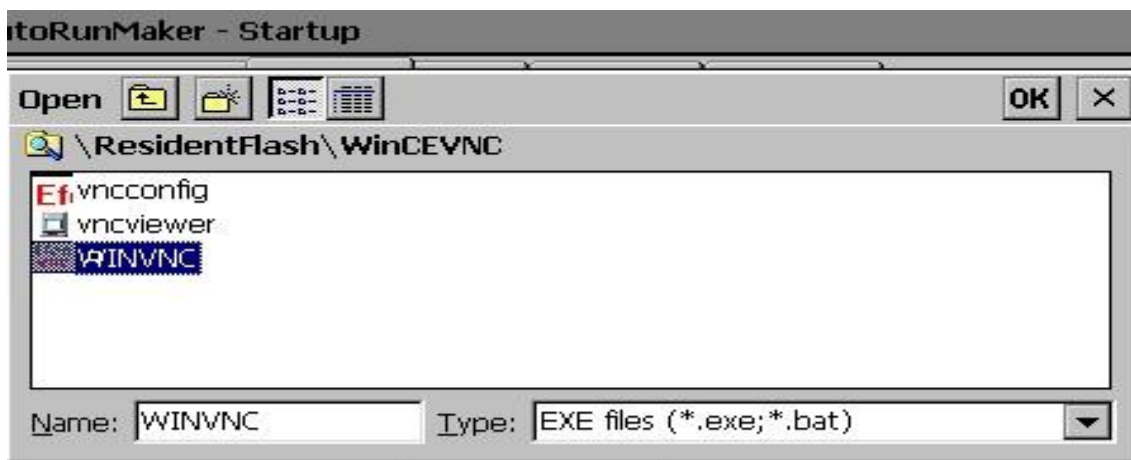


All the content from AutoRunMaker folder at USB disk is now copied to Resident flash

Step-4 : Now, press “Startup” Tab in AutoRunMaker



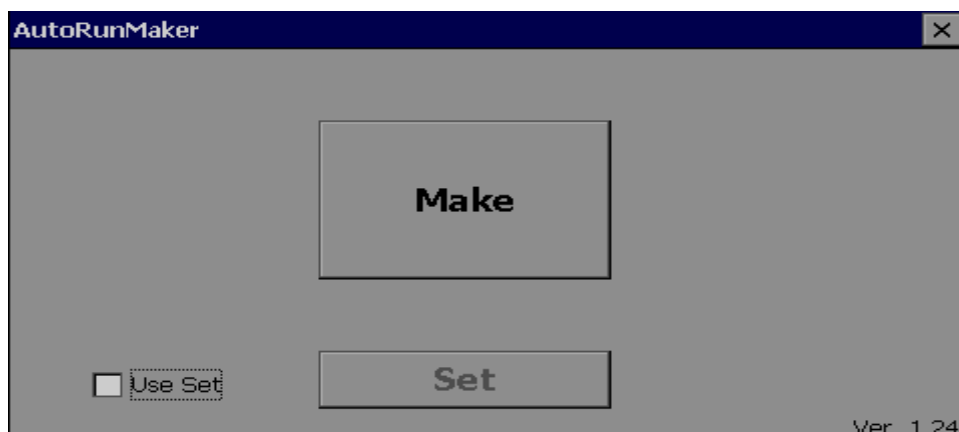
Press  button to select path \ResidentFlash\winCEVNC for the exe file , Select “WINVNC.exe” and then press “OK” at top right corner



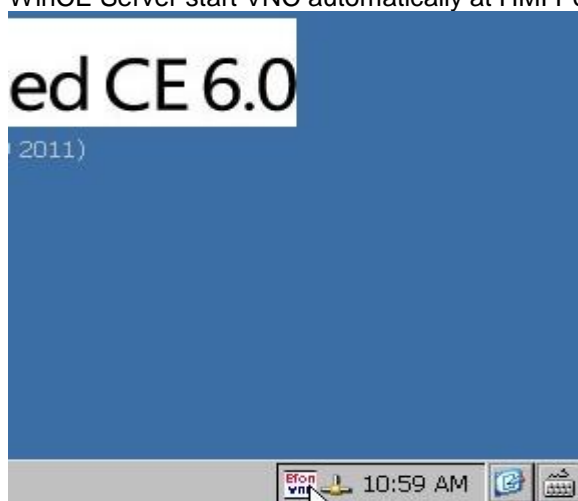
And then Press “OK” in AutoRunMaker-Startup



And then Press "Make" button



Step-5 , Now remove the USB disk, Switch OFF Power supply to HMI, Power ON HMI again. WinCE Server start VNC automatically at HMI Power ON as shown in the right-bottom tool bar.

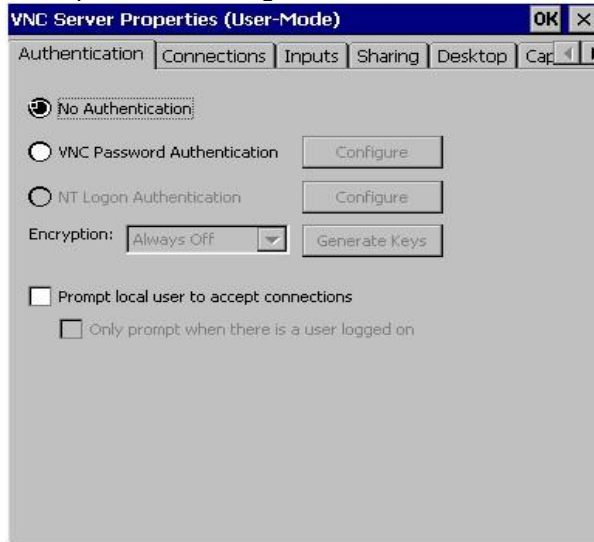


2.4 VNC Configuration

User can double-click the VNC icon in the right-bottom tool bar to configure VNC.

Example : Password Configure

No password setting :



Password setting :



After VNC configuration user must suspend and HMI Power On again.

