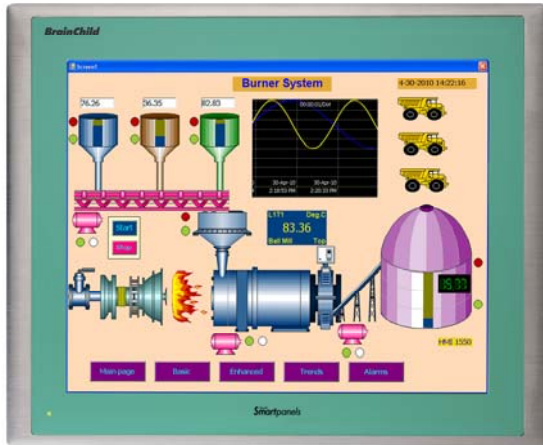


Brainchild *Smartpanel* HMI Series



Features

- Display: 4.3", 7", 10" & 15", 65,536 colors, TFT LCD HMI touch screens
- Windows CE.net® v 6.0 embedded Operating System
- Fan-less cooling system:
- Connectivity ports: 2-Serial, 1-USB 1.1 and 1-Ethernet (10/100-T)
- Networking Cards: EtherCAT, Profibus-DP, Profinet, DeviceNet, Ethernet/IP, CANopen, CCLink and BACNet
- NEMA4/IP65 compliant front panel
- Memory: 128MB RAM Flash, 128 or 256MB SDRAM & one SD card slot

Introduction

Brainchild *Smartpanel* HMI /Operator Interfaces provide high performance wide panel high-resolution TFT color displays with the memory and speed to handle dynamic graphics. Standard memory is 128MB Flash and dependent upon display size either 128MB or 256MB SDRAM. With an SD card slot available there is sufficient internal and external memory for almost any HMI application (data logging, alarm, recipe or other file management).

Smartpanel HMI screens are available in four sizes, 4.3", 7", 10", 10" widescreen and 15" allowing you to choose the model that best fits the requirements or your process.

Panel Studio is easy to use yet powerful development software, offering high-resolution Symbol Library, Tag Database, Screen Templates, Pop-up Screens, Schedulers, Recipe, Alarms, Data Logging, Security, Portrait or Landscape mode and more.

Designed to require very low power the *Smartpanel* Series offer Fan-less operation providing reliable operation & long life.

Environmental Specifications

- Operating temperatures: 0° ~ 50°C (32°F ~ 122°F)
- Storage temperatures: -20° ~ 60°C (-4° ~ 140°F)
- Relative Humidity: 10% ~ 90% @40°C, non-condensing.
- Shock (operation): 15g at 11msec
- EMI: Complies with FCC class A
- CE: Complies with EN 61000-3-2:2006 and EN61000-3-3-1995+A2: 2005
- UL: file # 305931
- Front panel meets IP65 / Nema 4x.

Touchscreen

- Type: 4-wire, analog resistive
- Resolution: continuous
- Light Transmission: above 80%
- Life: 1-million activation minimum

LCD Display

Display type	TFT LCD
Display sizes	4.3", 7", 10", widescreen 10" & 15"
Maximum colors	65,536
Resolution	HMI450: 480 x 272 HMI730/750: 800 x 400 HMI1050/1550: 1024 x 768
Storage temperature	-20 ~ 60°C (-4°F ~ 140°F)
Operating temperature	0 ~ 50°C (32°F ~ 122°F)
Backlight	LED (HMI 1550 CCFL)
Backlight life time	50,000 hrs (HMI 450 30K hrs)
Contrast ratio	500:1

Specifications

- Enclosure: IP65 front, IP20 rear (rear is metal)
HMI 450/730: Plastic front
HMI 750/1050/1550: Aluminum front, optional Stainless Steel
- Display: 7" 65,536 color TFT LCD
- Processor and CPU Speed:
 - HMI 450/730: ARM Cortex-A8 / 667 Mhz
 - HMI 750/1050/1550: ARM Cortex-A8 / 1 Ghz
- Storage: 128MB on-board Flash Memory
128 or 256MB SDRAM (HMI 450 & 730 128MB)
1 SD® card slot
- I/O: 2-Serial Ports: Variety of PLC & Inverter Protocols
Com1: RS232C 9-pin male
Com2: RS232C/RS422/RS485 DB25 female
1 Ethernet port: 10/100-T (variety of PLC Protocols)
1-USB port: USB 1.1 Host
Optional Network: Variety of Fieldbus Protocols:
Fieldbus Protocols: EtherCAT, CCLink, DeviceNet
Ethernet/IP, CANopen, BACnet/IP
Profibus-DP and Profinet
- Sound Input / Output: optional HMI 750, 1050 & 1550
- RTC (Real Time Clock): Standard
- Power Input: 11-36VDC or 90-250VAC (n/a HMI450)

Model	FDC HMI 450	FDC HMI 730	FDC HMI 750	FDC HMI 1050	FDC HMI 1550
DISPLAY					
Operating System	Windows CE 6.0 optimized for Pane Studio Development software; available for OEM with standard CE6				
Display Size & Type	4.3" TFT	7" TFT		10" TFT	15" TFT
Active Display Area (W x H mm)	95 X 54 (3.7" x 2.1")	152 x 91 (5.91" x 3.58")		203 x 152 (7.99" x 5.98")	304 x 228 (11.96" x 8.97")
Display Position	Both horizontal & vertical				
Maximum Color	65,536 color (16 Bit)				
Resolution	480 X 272	800 X 480		1024 X 768	
Backlight Type/Life	LED 30K Hours	LED 50K Hours			CCFL 50K Hours
Brightness Adjustment	Yes				
Screen Saver	Yes				
Touch Screen Type	Resistive Analog				
Main Hardware					
Processor, CPU Speed	ARM Cortex-A8 667 Mhz		ARM Cortex-A8, 1 Ghz		
Flash Memory (ROM)	128MB				
SDRAM	128MB		256 MB		
SD Card Slot	Option		Yes		
RTC	Built In Real Time Clock				
Buzzer	Yes				
Sound Input/Output	N.A.		Option		
Interfaces					
RS232C, DB9 Male			1		
RS232C/ RS422/ RS485, DB25 Female			1		
Ethernet 10/100 Mbps, RJ45 Jack	Option		1	2	
USB Host 1.1			1		
Other Networks (slave)					
PROFINET	Option	N.A.	Option		
DeviceNet	Option	N.A.	Option		
EtherNet/IP	Option	N.A.	Option		
CANopen	Option	N.A.	Option		
CC-Link	Option	N.A.	Option		
General Specification					
Power Supply	11-36 VDC	11-36 VDC or 90-250 VAC			
Power Consumption (w/o sound output)	10 W	12 W	13 W	15 W	27 W
Power on LED Indicator	Yes				
Protection Structure	Front Panel IP65 / Rear IP20				
Outer Dimensions (W x H x D mm)	140 x 116 x 57 (5.51" x 4.47" x 2.44")	212 x 156 x 57 (8.35" x 6.14" x 2.44")		325 x 263 x 56 (12.79" x 10.35" x 2.20")	400 x 310 x 56 (15.75" x 12.20" x 2.20")
Mounting Depth (mm)	51 (2.007")			50 (1.968")	
Panel cutout (W x H mm)	123 x 99 (4.84" x 3.89")	197 x 141 (7.75" x 5.55")		310 x 248 (12.2" x 9.76")	367 x 289 (14.4" x 11.4")
Front Bezel, Housing Material	Plastic, Plastic		Aluminum, Metal		
Stainless Steel Front Bezel (option)	N.A.		Option (IP66K)		
Installation	Panel Mount				
Net Weight (kgs)	.5 kgs (1.10 lbs)	1.2 kgs (2.65 lbs)	1.4 kgs (3.08 lbs)	3.6 kgs (7.93 lbs)	5.1 kgs (11.24 lbs)

P.O. Box 1196 / Bridgeview, IL 6045

Office: 888.751.5444 / Fax: 888.307.8014

Technical Support: 866.342.5332