

“SCADA” COMPUTER SYSTEM IN A “28 OZ, NEMA4” BOX!

ORION is Future Design’s newest product that provides a complete SCADA system in a compact (5.7” color) Nema 4 interface. No external PC software is required for setup. Number of loops, tagnames, alarm messages and more are all configurable via the touch screen interface.

ORION offers configurable real time bar and trend interfaces for all points as well as an internal data viewer that provides historical trend data for any point(s) in the system. “Touch and Drag” zoom is standard for all real time and historical trends. More than 1 year of data can be stored in Orion’s internal memory. Data transfer is “Plug & Play” via a USB memory stick.

Data storage for hundreds of tuning, single setpoint recipe and profile recipe files is standard on Orion. The menu driven “Windows” interface is simple and intuitive to use, making system setup a snap.

System security is not a problem with Orion. Orion supports up to 30 users with assignable rights (Administrator, Supervisor, Operator), as well as full audit trail listings (with print support) for all user actions.

Orion’s digital alarm manager provides hi-speed digital input monitoring (25 inputs at 15ms resolution) for “First In” alarm applications (combustion monitoring, etc.). The alarm manager also supports up to 30 relay outputs (with adjustable timer “off” delays for each relay) to replace panel push button to meet a variety of applications. The standard USB interface provides graphic, trend and text printouts directly to a standard inkjet printer (HP6540 supported).

Orion’s built in Ethernet “Web Server” provides wired or wireless connectivity to all data data via a local intranet or the World Wide Web.



FDC-ORION FOR FDC CONTROLLERS

- ▶ INTERFACE UP TO 20 LOOP CONTROLLERS.
- ▶ GRAPHIC, TREND, BAR, ALARM AND OVERVIEW SCREENS.
- ▶ STANDARD USB PRINTING TO INKJET PRINTERS.
- ▶ MANUAL AND AUTO TUNE INTERFACE VIEWS.
- ▶ ALARM MONITORING AND SETPOINTS FOR ALL LOOPS.
- ▶ MORE THAN 1 YEAR OF HISTORICAL DATA STORAGE.
- ▶ HISTORICAL DATA VIEWER FOR ANY POINT/TIME.
- ▶ SINGLE SETPOINT, TUNE AND PROFILE STORAGE.
- ▶ INTERFACE, HISTORY, PRINT & WEB SERVER IN A SINGLE PACKAGE.
- ▶ DIGITAL ALARM MANAGER & PUSH BUTTON/TIMER REPLACER.

FDC-ORION SERIES SPECIFICATIONS

POWER

24VDC - 500mA maximum current draw.

DISPLAY

Display Type: STN Color LCD

Display Size: 5.7 “

Max Colors: 256

Resolution: 320 X 240

Pixel pitch (HxV,mm): 0.36 X 0.36

Luminance(cd/m²): 100

Storage Temp (C): -20 to 60

Operating Temp (C): 0 TO 45

Backlight: 1 CCFL

Contrast Ration: 30:1

TOUCHSCREEN

Type: 4 wire, analog resistive

Resolution: Continuous

Light transmission: above 80%

Life: 1 million activation minimal

PROCESSOR

Type: Cirrus 200Mhz

MEMORY AND OS

Memory: 64MB of internal RAM

Operating System: Windows CE.net

LOOP INTERFACE

Type: 300,100 & C series controllers and digital alarm manager using RS485 multidrop interface.

Max Loops: 20

DATA STORAGE

Type: 128 Mb compact flash for firmware/recipes
128 Mb “Plug & Play” USB memory stick for data.

CONNECTION

Serial: Com1, 2 & 3 - RS232/RS485

Ethernet: 10 baseT

USB: 2 host

Sound: 16 bit sound output

PHYSICAL

Front Panel: Meets Nema4/IP65

Shock: 10 to 25Hz(X,Y,Z direction 2G, 30 mins)

Dimensions: 204” (H) x 150” (W) x 48” (D) - mm

Weight: 28.21.0 oz. (0.8 kg)

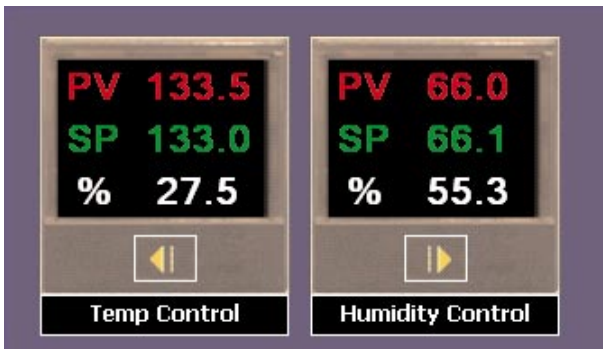
WHAT CAN ORION DO FOR YOU?

1. Orion combines the control interface, PC data storage, strip, video and circle chart recording into one easy to use package.
2. Easy to configure for custom control applications. No PC software required.
3. Intuitive, easy to use interface for end user customers. Reduced training curve involved.
4. File Utilities to transfer all internal files to standard USB "I-Stick" memory device. Orion PC data viewer available at no charge.
5. Full USB "print" capability with standard "HP" inkjet printer (HP model 6540 supported).
6. Built in "Web Server" provides wired or wireless access to all sterilizer data via local intranet or World Wide Web.

Connect ORION to FDC controllers with the built-in RS485 interface.



Single and dual views for loops



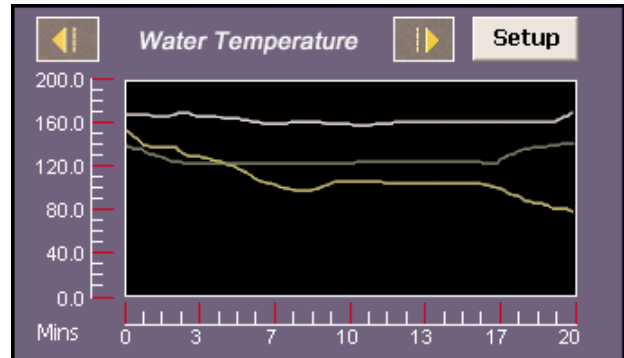
PROFILE OPEN, EDIT, SAVE AND DOWNLOAD!



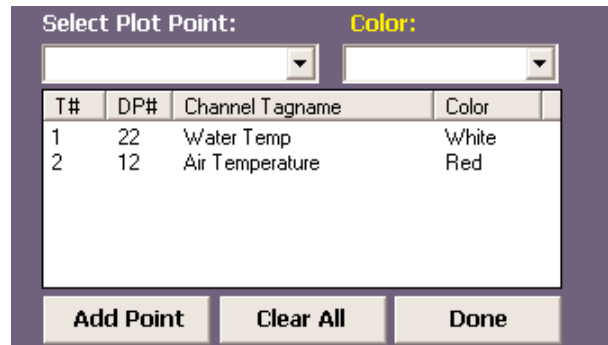
TO ORDER ORION:

1. #FDC-2010 : 5.7" color computer interface.
2. #ORION-L-CF : 128Mb smart card (Includes ORION loop control software).
3. #ORION-ISTICK: 128MB "Plug and Play", USB storage device for data history.
4. #CA-2010-20 : 20ft Cable to connect ORION RS485 port to loop controllers(2 wire cable).
5. #PS5R-SD24: 60watt DIN rail power supply (ClassII) Dimensions 95mm(H) X 36mm(W) X 108mm(D)

Real Time and Historical Trends



Historical plot selection for any point



SP Recipes for easy product setup

