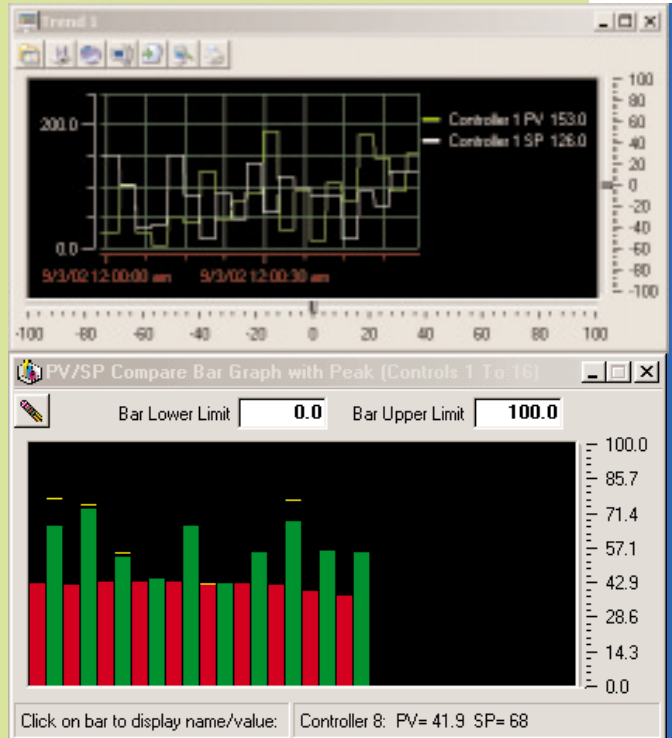


Future Design's MultiView is a complete configuration and data acquisition package for Future Design controllers.

Configurable data save, real time trends, alarm logging, digital values, bargraphs and more! Up to 64 units can be connected. Complete project setups can be saved or loaded to eliminate time consuming setup tasks during product or system changes.

The built-in data viewer allows the user to view any data file in a spreadsheet format without leaving the program. Plotting historical data is as easy as selecting cells and pressing the "plot" button.

MULTIVIEW INCLUDES 21 CFR PART 11 FEATURES FOR USE IN PHARMACEUTICAL OR ANY INDUSTRY THAT REQUIRES CONTROLLED SECURITY ACCESS, ELECTRONIC SIGNATURES AND COMPLETE AUDIT TRAIL LISTINGS.



MULTIVIEW SUPPORTS FDC MODELS 2500, 9300, 8300 AND 4300 SERIES. WIN98(SP2), NT4.0 (SP6A OR LATER), XP PROFESSIONAL AND WIN2000 SUPPORTED.
 NOTE: 21 CFR SECURITY DISABLED WHEN USING WIN98.

MULTIVIEW FEATURES

CONTROLLER FACEPLATES

Up to 64 controller faceplates. Setpoint access for each controller.

DATA LOGGING

Number of points to log and user defined interval for logging adjustable by user. All log data is encrypted for "Tamper Proof" operation. Auto-generate log file names and auto-log on startup are supplied as options.

AUDIT TRAIL

When security is enabled, all user and system actions are written to the encrypted audit trail. Audit trails can be viewed, exported or printed. Audit trails are encrypted for "Tamper Proof" operation.

ELECTRONIC SIGNATURES

When security is enabled, data files can be signed by authorized personnel with authentic userID and password. Electronic signatures can be verified as well as detection of altered data files.

DATA VIEWER

Built in data viewer provides analysis of data files in a spreadsheet type format. "Auto Trend" of selected cells is included with no setup required.

DIGITAL VALUES

Digital values window monitors process value and setpoint for all controllers activated in system.

REAL TIME TRENDS

8 real time trends. Up to 12 points can be configured for each trend. Trend setups can be saved to disk to reduce setup time during product runs.

BARGRAPHS

Bargraphs for up to 64 controls. Bargraphs are "auto config" when controller is activated in system. Bargraph limits adjustable by user.

SINGLE SETPOINT RECIPES

Single setpoint recipes allow an operator to set the control setpoint for many controllers from a batch template. Templates can be saved to disk for use at any time.

ALARM LOGGING

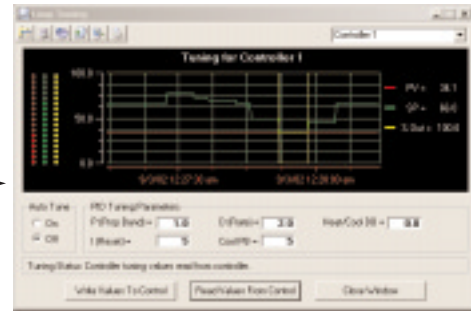
System alarms are monitored by the alarm logger. Date, time, PV at alarm and operator acknowledge are supplied. Alarm logs can be viewed, exported or printed.

FUTURE DESIGN MULTIVIEW

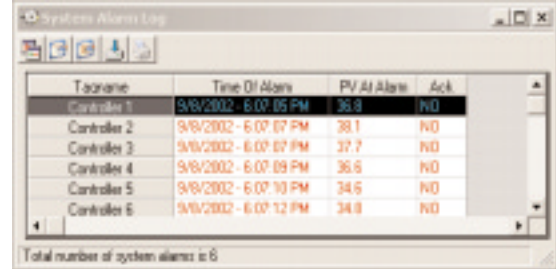
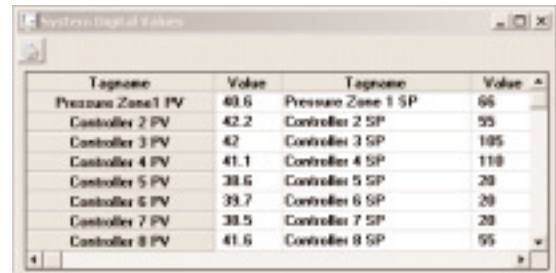
OVERVIEW/SCREENSHOTS



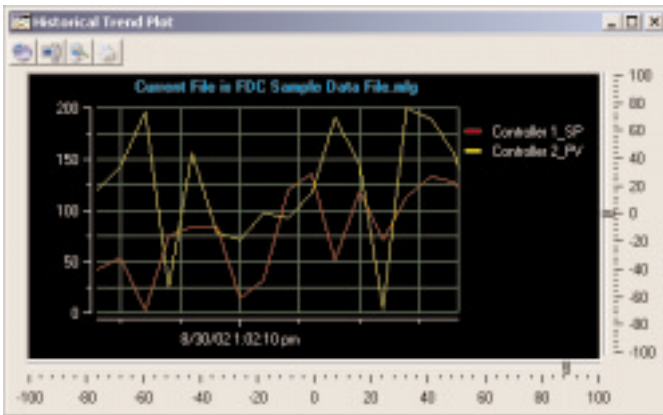
Controller faceplates provide an operator view of alarm, PV and setpoint. Auto config of faceplates for profile control when connected to Future Design's 300 series 1/16DIN profiler.



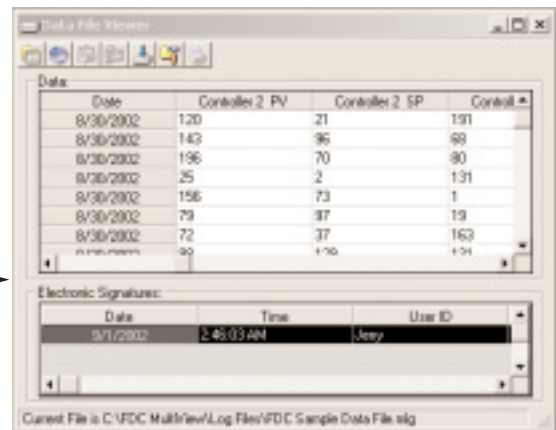
Loop Tuning setup provides the operator with manual and auto-tune capabilities.



Digital values/alarm monitor supply all system data to the operator. Alarms can be printed or acknowledged on demand.



Historical or real time trends. Real time trends allow up to 12 assignable points per trend. Historical trends are setup automatically by selecting cells in the historical grid. All parameters are configurable including color, ticks, scale and date format. Trend setups can be saved to disk for later retrieval. Trends can be printed or saved as jpeg files.



Built in data viewer makes analysis of data a snap. Drag across cells and "auto-trend" with a click of the mouse. Data compression and expansion of data included in trend view.

