

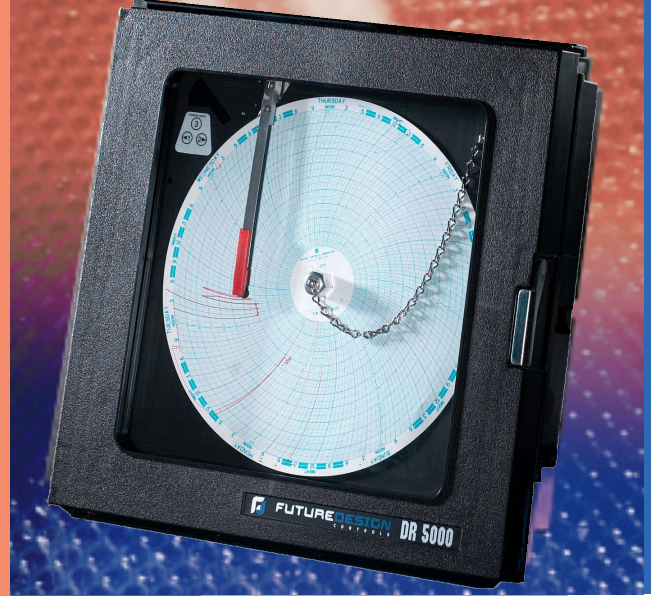
You Asked, We Delivered!

Future Designs DR 5000 is a simple 10" Circular Chart Ink Recorder.

The DR 5000 is a circular chart recorder like no other. The DR 5000 is the first recorder to self document setup configuration and can operate using standard or competitive charts, another first in the industry.

Eliminate multi-vendor chart inventories while reducing operator confusion. Protect your process with the DR 5000 battery backup option, continuous recording for up to 48 hours in the event of power loss.

The DR 5000 - The right choice for recording.



DR 5000

DR 5000 CIRCLE CHART RECORDER

- *No manual required for setup*
- *No "dip switches" to set during configuration*
- *Uses standard or competitive charts*
- *Up to 48 hrs of recording during power loss*
- *UL, CUL, CE*
- *"Self Documents" setup configuration*

DR 5000 SPECIFICATIONS

POWER

Line Voltage: 110/220VAC, 50/60Hz
Power Consumption: 15 VA maximum

INPUT

Thermocouple (T/C): Type J, K, T, R, B, S,
RTD: PT100 ohm RTD (385 curve)
Linear: 4-20 mA, 1-5 VDC, 0-5 VDC
Range: Per table in manual
Common Mode Rejection: > 120dB at 60 Hz
Cold Junction Accuracy: ± 0.2°C @ 25°C ambient
Ambient Error: ± 0.01% span/°C from 25°C ambient
Isolation: inputs share common ground on 2 pen units
Input Impedance: Linear = 249 ohm/ TC = 470Kohm

RECORDING

Chart Size: 10"
Recording Accuracy: ± 0.5% of span (100 division span)
Sensor Break: Full scale Pen < 10 seconds
Chart Speed: Configurable
Input Filtering: Programmable up to 120 seconds

OPTIONS

Battery Back up

ENVIRONMENTAL AND PHYSICAL

Operating Temperature: 0 to 60°C
Storage Temperature: -40 to 65°C
Humidity: 0-90% RH (non-condensing)
Vibration: 0.3 to 100Hz @ 0.2g
Mounting: ± 20 degrees of vertical
 ± 10 degrees of horizontal
Moldings: Fire retardant Noryl w/acrylic window
Panel Rating : Nema 3 std(Nema4 option)
Dimensions: 14.0" (H) x 14.0" (W) x 3.8" (D)
Panel Cutout: Industry Standard 12.7" x 12.7"
Weight: 7 pounds maximum

ORDERING INFORMATION

Enter a number in each box which corresponds to the specifications you want when ordering the DR 5000.

DR 5000

		0	0			
--	--	---	---	--	--	--

POWER INPUT

- 1: 110/220VAC 50/60 Hz Selectable

RECORDING STYLE

- 1: 1 Pen Ink
- 2: 2 Pen Ink

Fixed Character

- 0: Fixed Character

Fixed Character

- 0: Fixed Character

CHART OPTIONS

- 1: 10" Counterclockwise Rotation (standard)
- 2: 10" Clockwise Rotation

ENCLOSURE OPTIONS

- 1: Standard
- 2: Nema 4
- 3: Platen Mount

SPECIAL OPTIONS

- 0: None
- 1: Battery Backup*

* 48 hours of continuous recording on ink style recorders.*1

UL\CULiFILE# E232762, E232369

CE

